



## Market Highlights



Confidential. For Humana Broker or Humana Agent/Agency use only. This material, including any subpart(s), is not to be used as marketing and is not to be provided to a prospect, an applicant, member, group or the general public. This is not CMS approved.

# Disclaimer

This material is confidential and for Humana employed agents and External agent/agency use only. This material, including any subpart( s ), is not to be used as marketing and is not to be provided to a prospect, an applicant, member, group, or the general public. This is not CMS approved.



# Table of Contents

Click on the links below to jump to a specific state.



# California

Click on the links below to view  
California's Market Highlights



Confidential. For Humana Broker or Humana Agent/Agency use only.  
This material, including any subpart(s), is not to be used as marketing  
and is not to be provided to a prospect, an applicant, member, group or the  
general public. This is not CMS approved.



# Florida



**Click on the links below to view  
Florida's Market Highlights**

Confidential. For Humana Broker or Humana Agent/Agency use only.  
This material, including any subpart(s), is not to be used as marketing  
and is not to be provided to a prospect, an applicant, member, group or the  
general public. This is not CMS approved.



# Florida CarePlus

Click on the links below to view  
Florida's CarePlus Market Highlights



Confidential. For Humana Broker or Humana Agent/Agency use only.  
This material, including any subpart(s), is not to be used as marketing  
and is not to be provided to a prospect, an applicant, member, group or the  
general public. This is not CMS approved.



# Idaho



Click on the links below to view  
Idaho's Market Highlights

Confidential. For Humana Broker or Humana Agent/Agency use only.  
This material, including any subpart(s), is not to be used as marketing  
and is not to be provided to a prospect, an applicant, member, group or the  
general public. This is not CMS approved.



# Illinois

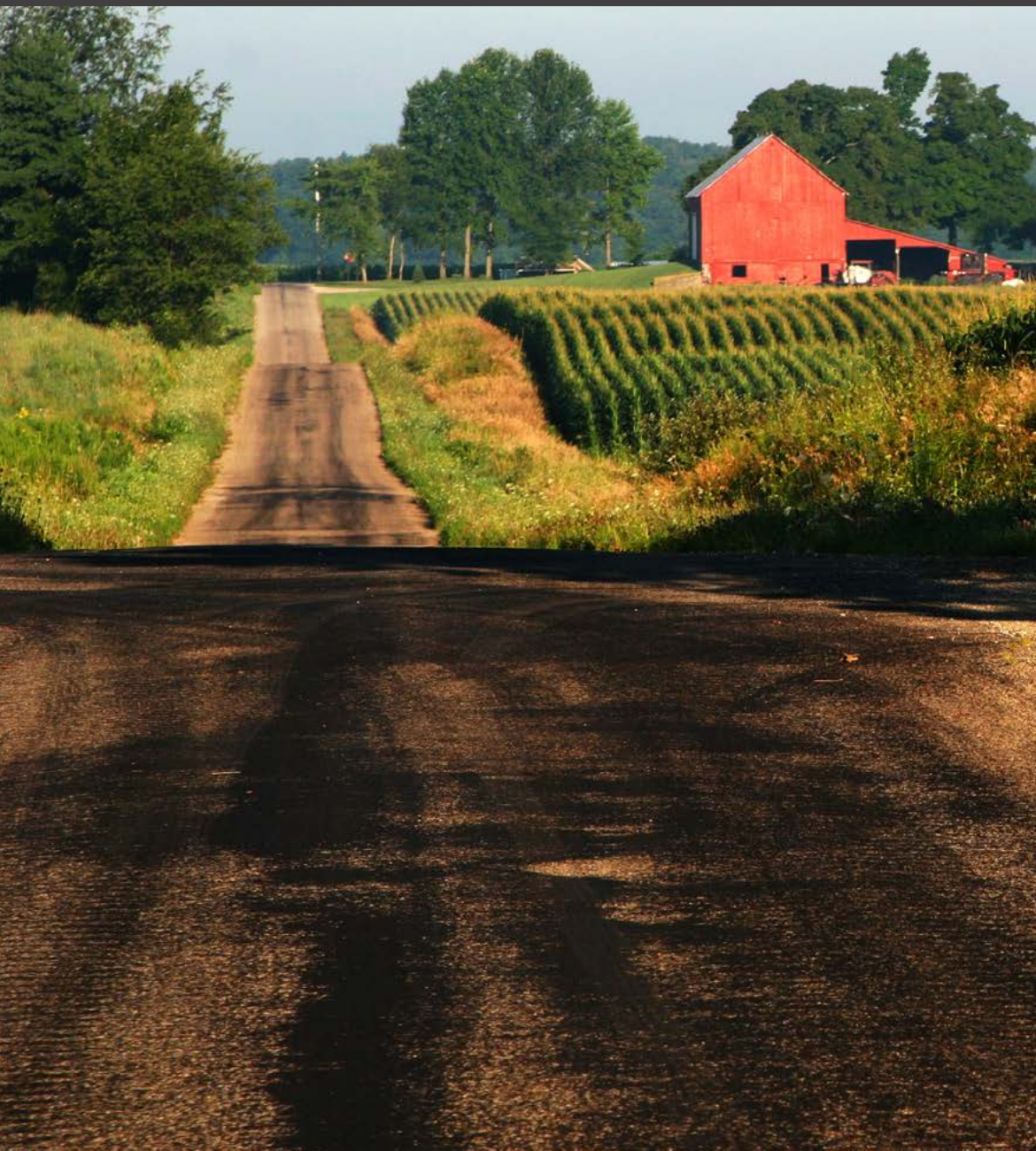


**Click on the links below to view  
Illinois's Market Highlights**

Confidential. For Humana Broker or Humana Agent/Agency use only.  
This material, including any subpart(s), is not to be used as marketing  
and is not to be provided to a prospect, an applicant, member, group or the  
general public. This is not CMS approved.



# Indiana



**Click on the links below to view  
Indiana's Market Highlights**

Confidential. For Humana Broker or Humana Agent/Agency use only.  
This material, including any subpart(s), is not to be used as marketing  
and is not to be provided to a prospect, an applicant, member, group or the  
general public. This is not CMS approved.



# Louisiana



**Click on the links below to view  
louisiana's Market Highlights**



Confidential. For Humana Broker or Humana Agent/Agency use only.  
This material, including any subpart(s), is not to be used as marketing  
and is not to be provided to a prospect, an applicant, member, group or the  
general public. This is not CMS approved.



# Michigan

**Click on the links below to view  
Michigan's Market Highlights**



Confidential. For Humana Broker or Humana Agent/Agency use only.  
This material, including any subpart(s), is not to be used as marketing  
and is not to be provided to a prospect, an applicant, member, group or the  
general public. This is not CMS approved.



# Mississippi

**Click on the links below to view  
Mississippi's Market Highlights**



Confidential. For Humana Broker or Humana Agent/Agency use only.  
This material, including any subpart(s), is not to be used as marketing  
and is not to be provided to a prospect, an applicant, member, group or the  
general public. This is not CMS approved.



# New York



**Click on the links below to view  
New York's Market Highlights**

Confidential. For Humana Broker or Humana Agent/Agency use only.  
This material, including any subpart(s), is not to be used as marketing  
and is not to be provided to a prospect, an applicant, member, group or the  
general public. This is not CMS approved.



# Pennsylvania

Click on the links below to view  
Pennsylvania's Market Highlights



Confidential. For Humana Broker or Humana Agent/Agency use only.  
This material, including any subpart(s), is not to be used as marketing  
and is not to be provided to a prospect, an applicant, member, group or the  
general public. This is not CMS approved.



# South Carolina

**Click on the links below to view  
South Carolina's Market Highlights**



Confidential. For Humana Broker or Humana Agent/Agency use only.  
This material, including any subpart(s), is not to be used as marketing  
and is not to be provided to a prospect, an applicant, member, group or the  
general public. This is not CMS approved.



# Tennessee

Click on the links below to view  
Tennessee's Market Highlights



Confidential. For Humana Broker or Humana Agent/Agency use only.  
This material, including any subpart(s), is not to be used as marketing  
and is not to be provided to a prospect, an applicant, member, group or the  
general public. This is not CMS approved.



# Texas



Click on the links below to view  
Texas's Market Highlights

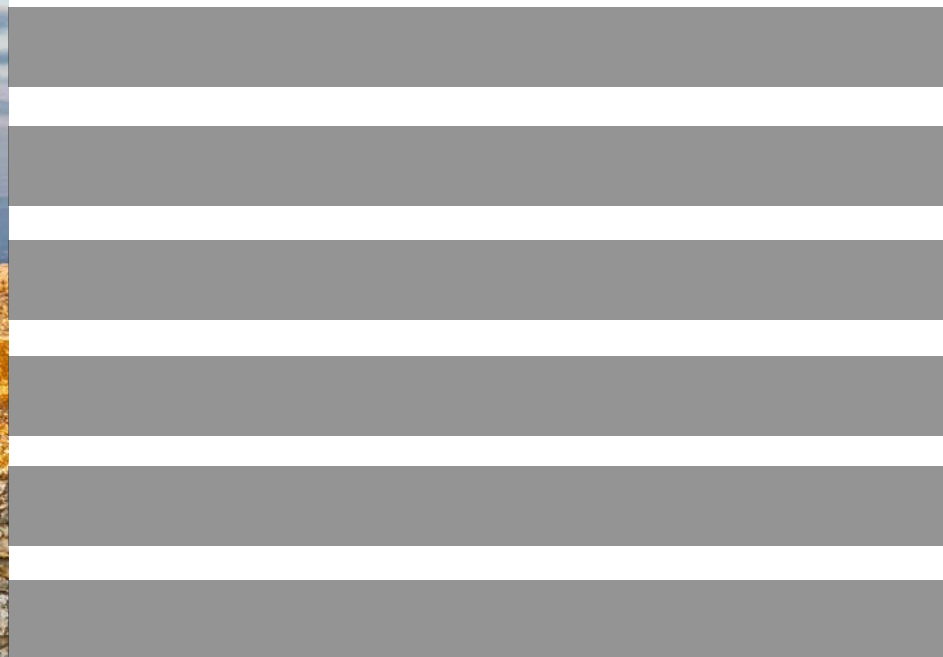
Confidential. For Humana Broker or Humana Agent/Agency use only.  
This material, including any subpart(s), is not to be used as marketing  
and is not to be provided to a prospect, an applicant, member, group or the  
general public. This is not CMS approved.



# Virginia



**Click on the links below to view  
Virginia's Market Highlights**



Confidential. For Humana Broker or Humana Agent/Agency use only.  
This material, including any subpart(s), is not to be used as marketing  
and is not to be provided to a prospect, an applicant, member, group or the  
general public. This is not CMS approved.



# West Virginia

**Click on the links below to view  
West Virginia's Market Highlights**



Confidential. For Humana Broker or Humana Agent/Agency use only.  
This material, including any subpart(s), is not to be used as marketing  
and is not to be provided to a prospect, an applicant, member, group or the  
general public. This is not CMS approved.